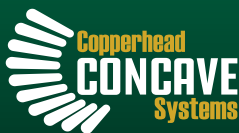


CopperheadAg PRODUCTS



**DEVELOPING AFFORDABLE SOLUTIONS
FOR CHALLENGES FACING THE MODERN FARMER.**

2023





SAVES YOU MONEY & FITS ALL PLANTERS

with the Copperhead Ag Furrow Cruiser
FURROW CRUISER COMPLETES



FURROW CRUISER INSERTS



Furrow Cruiser Inserts are available for farmers who would prefer to use their existing closing wheel hubs. These wheels easily install by separating your wheel hub and adding the insert to the center.

FEATURES

- Built-in depth control
- Compatible with multiple crops
- ① 16 angular teeth
- ② Made with UHMW Poly Material
- ③ Shallow depth option available
- Reversible for double life



Planters:
Case IH · Great Plains · Horsch · John Deere · Kinze · Monosem · White

Drills:
Case IH 500T · John Deere 60/90



PENETRATE TOUGHER FIELD CONDITIONS

with the Copperhead Ag Cruiser Xtreme

MADE FOR HIGH SPEED PLANTERS
WORKS GREAT FOR COVER CROPS



The Furrow Cruiser Xtreme is a cast spiked closing wheel that is made for the toughest of conditions and high speed planting. The wheel has 14 angular teeth that will break up sidewall compaction and close the furrow. The extra weight will help the wheel to penetrate tougher field conditions. Works great and stays clean in cover crops. The width of the wheel will help with firming of the soil around the seed and will prohibit the wheel from rooster tailing or moving the seed.

FEATURES

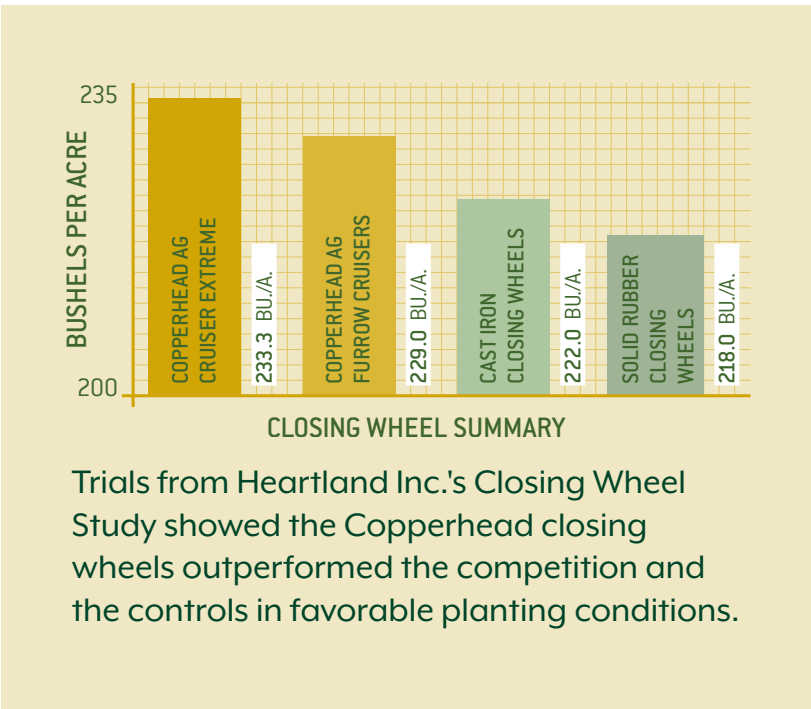
- Built-in depth control
- Compatible with multiple crops
- ④ 14 angular teeth
- ⑤ Cast iron construction
- ⑥ Unbeatable durability
- ⑦ Increased weight
- Reversible for double life



COPPERHEAD AG SPIKED CLOSING WHEELS

BENEFITS

- Ensures seed to soil contact
- Works in virtually all soil and tillage conditions
- Prevents furrows from re-opening
- Allows young roots to penetrate the sidewalls
- Eliminates air pockets
- Provides simultaneous firming and crumbling on both sides of the seed trench
- Improves emergence
- Cleans out well, ensuring that the planter can continue to run even in over saturated soil



“Running for four years. Great in heavy trash and mud. I will not run anything else. I got a new planter and these were the first things we added.”
Randy DB60 | South Dakota

BECK’S STUDY

PRESSURE SETTING: THIRD NOTCH			
CLOSING WHEELS	EMERGED POPULATION	BU./A	BU./A . DIFF.
Control: 2 Solid Rubbers	33,667	185.4	–
2 Copperhead Ag Furrow Cruisers®	34,334	233.9	+48.5
S.I. Distributing finger-Till Wheels	35,250	233.5	+48.1
Cast Iron	34,917	228.6	+43.2
Schaffert Zippers	33,584	225.8	+17.8
Pro-Stitches	33,917	203.2	+12.8
Yetter Spikes with Drag Chain	34,417	198.2	+12.8
Dawn Curvetines	33,667	193.7	+8.3
AVG.	34,219	212.8	+31.3
Individual results may vary.			

CONVERSION KITS

The Case IH Conversion Kit changes a wide closing wheel into a two-wheel closing system. Our Roll-Pin Bearing Conversion Kit converts John Deere 7000/ 7100, and Kinze Pre 1993 planter tailpiece to blot-style.

DRILL CRUISER

GROW THE POPULATION YOU PLANT

Copperhead Ag’s Drill Cruiser is a high quality cast iron wheel with angular, tapered teeth that provides a unique combination of sidewall crumbling and soil firming. The Drill Cruiser’s angular teeth help prevent clogging and allow it to work in all soil, from sandy to heavy and clay based.

Drills/Air Seeders:
John Deere 60 & 90 Series



BENEFITS

- Unique combination of sidewall crumbling and soil firming
- Eliminates sidewall compaction
- Angular tooth design helps prevent clogging
- Works in virtually all soil – from sandy to heavy and clay-based
- Prevents bouncing



SFP CRUISER

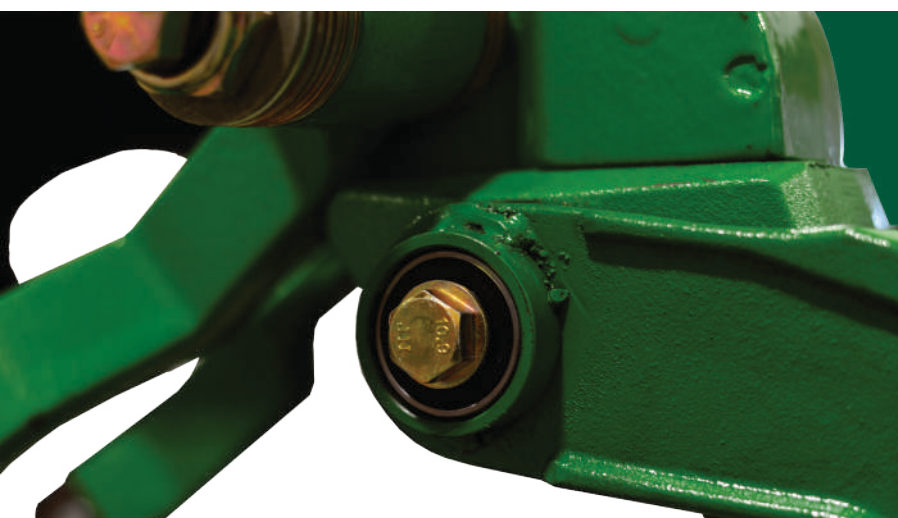
CLOSE & SEAL FERTILIZER INJECTION SLOT

The SFP Cruiser is an aggressive wheel that will crumble and close any type of ground in which you may be applying fertilizer. Solving the leaching issue reported by farmers, the SFP Cruiser fits the Separate Fertilizer Placement row unit built by John Deere, mounted on any of their drills or air seeders.



BENEFITS

- Heavy cast iron material allows for longer wear
- Works in a variety of soil conditions
- Eliminates soil compaction
- Crumbles soil during fertilizer application



KEEP YOUR CLOSING WHEEL FRAMES TIGHT

WITH THE
RK CLOSING WHEEL
FRAME REPAIR KIT

This kit replaces the eccentric bushing on a closing wheel arm with a double sealed ball bearing. It can be used on all planters regardless of wear on the closing wheel arm bracket. Having the closing wheel arms tight is critical to keeping closing wheels centered over the seed trench and ensuring that your closing wheels can operate at peak performance.

If your arm is worn, you will need to weld a bearing housing on to the outside of the tailpiece to hold a ball bearing. The closing wheel arm is made from weldable Cast Steel. If the closing wheel arm is NEW with NO acreage, you may be able to use a ball bearing without a weld on housing. Weld on housing strongly recommended.

BENEFITS

- Eliminate closing wheel frame alignment adjustments
- Proper frame alignment promotes centered rows
- Can be installed on new or used equipment

CLOSING WHEEL FRAME REPAIR KIT

Deere 1700, DB, XP and ME5 (worn tailpiece)

Deere 1700, DB, XP, and ME5 (new, no collar)

Deere 7200/7300

Deere 7000/7100

Kinze 2000/3000

White 8000

White 6000



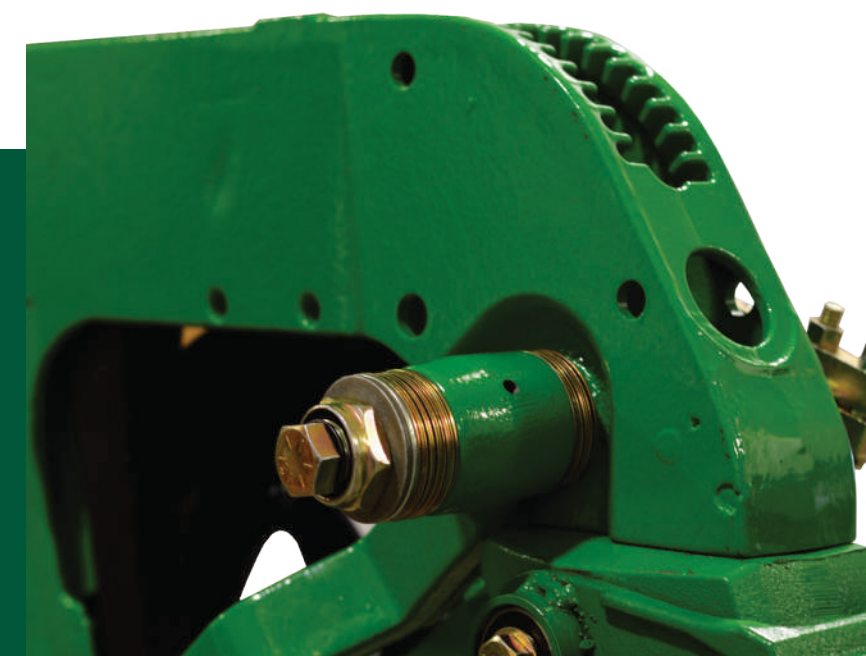
ELIMINATE WEAR ON YOUR GAUGE WHEEL ARM

WITH THE
RK GAUGE WHEEL ARM
REPAIR KIT

A loose gauge wheel arm allows dry dirt to rooster tail into the furrow before nutritious dirt is closed over the seed. A loose gauge wheel will also allow the gauge wheel to become plugged with mud much easier. The new pivot pin combined with the clamping force of the adjusting assembly keeps even the most worn arms tight to the row unit and keeps the gauge wheel tight to the disc openers. These points wear and the arm starts to lean allowing the tire to pull away from the opener disk.

BENEFITS

- Eliminate wear on gauge wheel arm pivot
- Tighten gauge wheel arms
- Produces more accurate furrow
- Eliminates need to replace bushings
- Eliminate plugging between wheel and disk
- Adds grease-able joint (Case IH only)
- Keeps dry dirt out of furrow



GAUGE WHEEL ARM REPAIR KIT

Deere 1700, DB, XP

Deere ME5

Deere 7200 12mm bolt

Deere 7000 - 5/8" bolt

Deere 7000, Kinze 2000/3000 - 1/2" bolt

Case IH 955+

Case IH 800/900

White 5000 to 9000



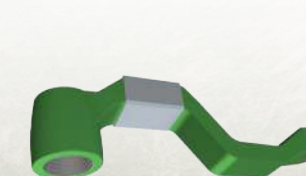
UPDATED ME5 BUSHING

- 1 Partially threaded
- 2 Square head
PR1151A required



ORIGINAL XP BUSHING

- 1 Fully threaded
- 2 Hex head
PR1150A required



GAUGE WHEEL ARM CLIP



PR1332 Case IH



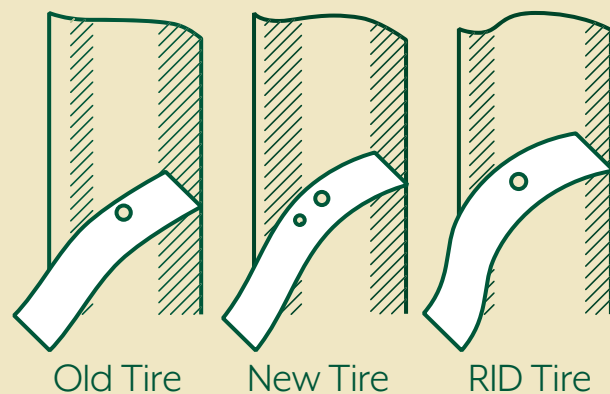
ELIMINATE GAUGE WHEEL MUD BUILDUP

WITH THE
RK MUD SCRAPER

SCRAPER BLADE PROFILES

Blades sit perpendicular to tire surface allowing greater pressure between the blade and tire

Made from 3/16" heat treated steel, blades are mounted at a 45 degree angle to deflect mud outward



Compatible with:
John Deere, Kinze (Pre 3000) & White (6000 & 8000)

- Blade positioned at 45° relative to the wheel better clearing
- Eliminate mud buildup on gauge wheels
- Allow for uniform seed depth
- Both angular and lateral adjustment possible
- Made from 3/16" heat treated steel
- Easily clamp to the hub of the gauge wheel with a U-bolt
- Two milled surfaces provide contact with hubs of different sizes
- Two cone point set screws embedded in the surface of the hub to provide stable mounting
- Ideal for 2x2x2 Liquid fertilizer buildup

SEED TUBE GUARD



- Heat treated steel bushings minimize wear
- Guides keep seed tube centered on guard
- Wear plates provide several times more wear area than OEM guards
- Protects seed tube longer than with OEM guards
- Ensures consistent furrow depth and shape for the entire planting season

SEED TUB GUARD - HIGH WEAR

Deere XP5	Deere Non XP/Kinze 2000/3000
White	Deere and Kinze 3 oversize
White 9000	

SEED TUBE GUARD - FERTILIZER TUBE ASSEMBLY



- Fertilizer Tube Attachment uses same nuts and bolts as guide to attach to guard.
- In-furrow fertilizer replacement

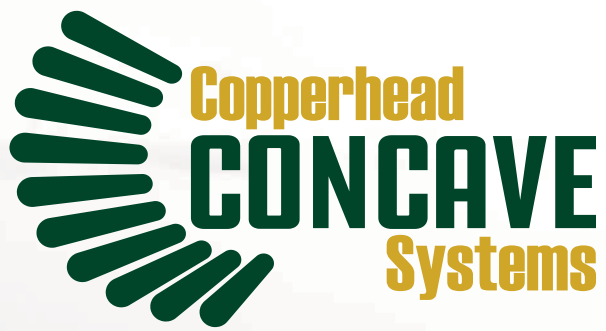
DRILL ARM REPAIR KIT



- Improves performance by forcing the closing wheel to track properly
- Reduces wheel bounce noticeably
- Three disc springs keep the closing wheel arm parallel to the end of the bearing housing
- Clamping force keeps arms straight

MODEL 750 BELOW SERIAL NUMBER 6000

50 & 60 Series, 90 Series w/ Drilled Bolt	Serial #1-3834
W/O Seals or Bearings	Serial #3835 - 5999 Straight Pin
Seals, Bearings & Pivot Bushing ONLY	Serial #3835 - 5999 Drilled Pin



ONE CONCAVE ALL CROPS



The Copperhead Concave System's Patented 90° notched bar allows the crop to be more efficiently threshed and unloaded sooner through the progressively more open spacing- allowing a cleaner sample that can be harvested faster with less fuel consumption. The hard surfacing and set-in robust construction ensure the copperhead concaves will last for many years to come.

BEST AFTERMARKET CONCAVE SINCE 2004

BENEFITS

- Eliminate rotor loss
- Increase capacity in ALL CROPS
- Decrease grain damage
- Decrease fuel consumption
- Cleaner grain sample
- Eliminate changing concaves for different crops
- Increase harvested bushels/acre
- Run combine on slower rotor speed
- Unload the concave quicker
- 10% threshing improvement

DOUBLE YOUR INVESTMENT
IN 1,000 ACRES

2X
ROI

JOHN DEERE X9, S OR STS SERIES & SMALL ROTOR
CASE IH 88 & FLAGSHIP & FENDT IDEAL

FEATURES

- Notched bar design
- Increased space between bars
- Adjustable & removable cover plates
- Universal crop design
- 135% more threshing surface area
- Includes disrupter lugs



CASE IH MODEL

Rice spike bars are included with Case IH model concaves.



90° HARD SURFACE



"I run a 9760 in seed beans and corn, since I've been running the concaves I have next to zero rotor loss, increased ground speed and have the cleanest sample with way less cracks and splits."

John

Farmer | Nebraska, USA



NUTRIMATE³

PUTS FERTILIZER IN THE ROOT ZONE, NOT ON THE SOIL SURFACE.

NutriMate3 design places starter fertilizer directly in the root zone, guaranteeing efficient uptake by roots. 2x2x2 Starter fertilizer placement encourages more uniform root growth and increased root mass which leads to higher yields.



SABERTOOTH ROW CLEANERS



Disc concavity, along with the Saber-tooth's unique tooth design, allows the trash discs to contact material in the seed bed then flow and release it between the rows. This tooth design prevents the concave disc from plowing the soil while removing residue from the seed bed that can cause seed germination and emergence problems. The concave disc design rolls residue from the seed bed with no down-force, increasing bearing life. The Saber-tooth discs are staggered for a lead and trailing disc to prevent the discs from plugging on residue and allows each disc to move material and not compete with each other.

Compatible With:
Case IH · Great Plains · Horsch · John Deere · Kinze · Monosem · White

NUTRIFLOATER



- Features an easily adjustable cam for consistent row cleaner depth adjustment
- Can apply high gallons of nutrients without risk of seed burn
- Can be used with adjustable down stop or with Precision Planting CleanSweep

NUTRIMATE 3



- Improves performance by forcing the closing wheel to track properly
- Reduces wheel bounce noticeably
- Three disc springs keep the closing wheel arm parallel to the end of the bearing housing

DRY

- Delivery tube places fertilizer in bottom of soil opening
- Easy and inexpensive to replace

LIQUID

- Check valve keep lines from draining at end of field

DOUBLE NUTRIMATE 3



- Nutrimate double disc features a notch disc to create rotation and prevent slippage and plugging
- Can be used with adjustable down stop or with Precision Planting CleanSweep
- Available with floating or pin adjust Sabertooth row cleaners

FLOATING

- Floating arm maintain optimal cleaning at any height
- Polymer bands create flotation in soft soil and minimize buildup crawling underneath the planter
- Eliminates stress on planter for smoother ride



SCREW ADJUST

- Features depth indicator
- Can be adjusted without crawling underneath the planter
- Heavy duty construction for seasons of maintenance free use



PIN ADJUST

- Quick adjust pin make adjustments easy
- Can be used in conjunction with NutriMate3 Fertilizer Applicator
- Heavy duty construction for seasons of maintenance free use



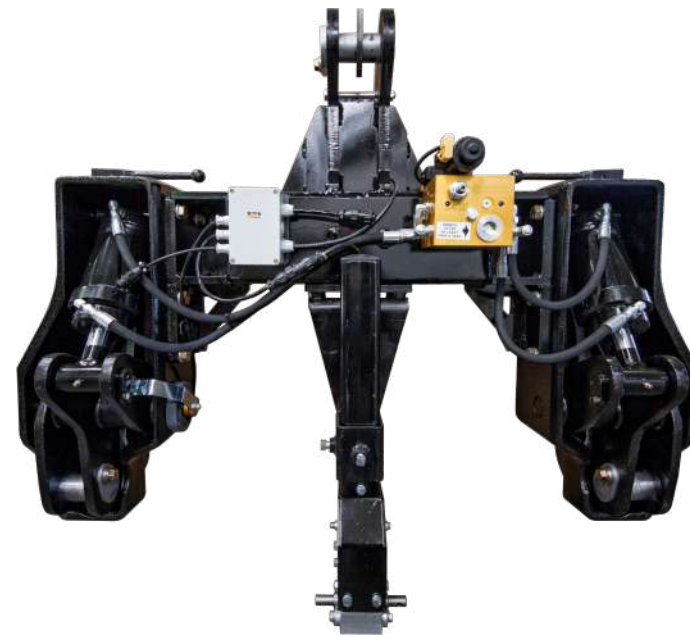


ACURATRAK GUIDANCE SYSTEM

Over 17 years of specializing in guidance technology has made AcuraTrak the industry leader in 3-point guidance systems. The AcuraTrak will handle the largest equipment manufactured (bedders, strip till, machines, planters, cultivators) pulled by all brands of tractors, including high horse powered front wheel assist and 4-wheel drive units.

BENEFITS

- Works in any row crop
- Provides implement guidance with or without GPS
- Eliminates crop root damage
- Reduces operator fatigue
- Increase operating speeds and tractor efficiency
- Guesses rows within 1/2"



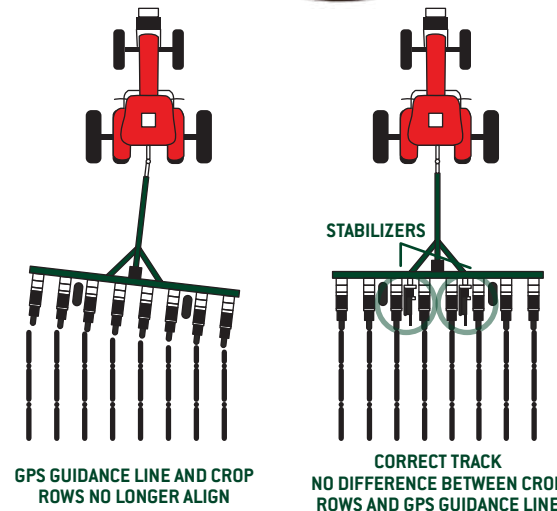
Compatible With:
John Deere Active Implement Guidance
Trimble's True Tracker Control Systems

IMPLEMENT STABILIZER

ELIMINATE IMPLEMENT DRIFT

Heavy duty rear-mounted disc stabilizer prevents implement from sliding due to moisture conditions, operating on the side of hills, or uneven wear on row units.

- Heavy duty for the heaviest equipment
- Standard safety shield
- Dependable coil spring protection
- Adequate height adjustment for high tool bar implements
- Maintenance-free pre-lubed bushing
- Spring pre-load to keep coulter from sagging when implement is raised
- Gives positive position control to any implement for improved performance
- Can be mounted on implements such as planters, bedders, cultivators etc
- Optional hydraulic lift kit available

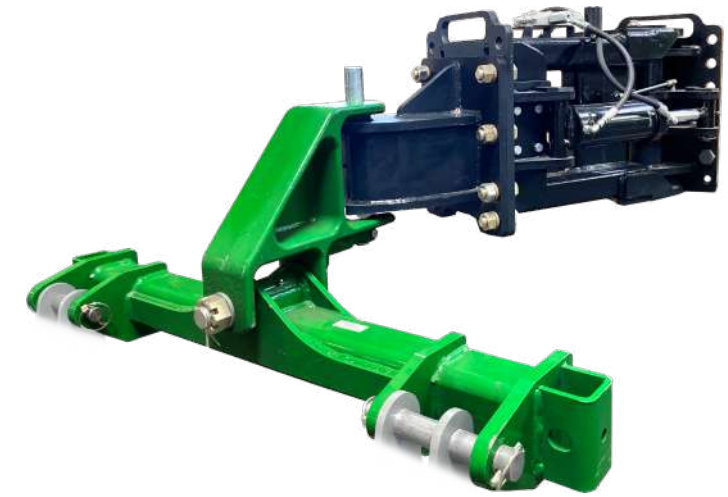


EXACTRAK

SOLVES THE PROBLEMS OTHER IMPLEMENT GUIDANCE PRODUCTS CREATE

Many of today's farming practices demand sub inch accuracy at the implement, such as precision fertilizer placement, precision (strip) tillage, precision seed placement, high draft implements, extreme terrain or soil conditions, and high value crops where any crop damage is not acceptable.

- Efficiently steers the implement from the front of the implement, not the rear
- Will not damage standing crops or disturb the soil like steerable coulters
- Solves mounting issues common to toolbar mounted systems (bulk fill planters, implements with rear hitches)
- Is able to steer in reverse and on headlands with implement raised minimizing headlands passes
- Compatible with John Deere® Active Implement Guidance
- 2-Point and draw bar versions are interchangeable



Compatible With:
John Deere Active Implement Guidance
Trimble's True Tracker Control Systems





COPPERHEADAG.COM